

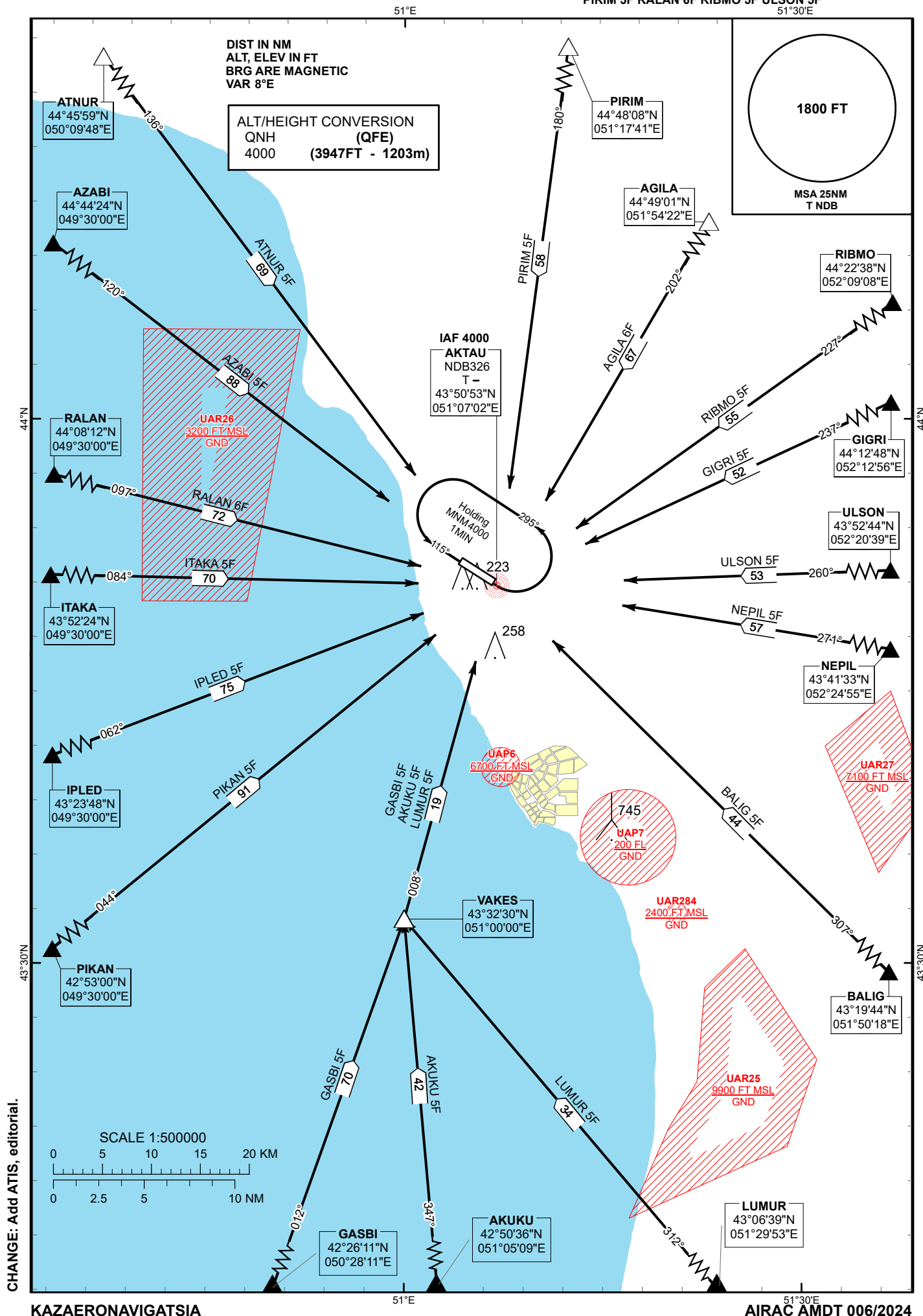
STANDARD ARRIVAL
CHART - INSTRUMENT
(STAR) - ICAO

TRANSITION ALTITUDE
10000 FT

AKTAU TOWER 120.7
AKTAU ATIS (EN) 130.1
AKTAU ATIS (RU) 126.2

AGILA 6F AKUKU 5F ATNUR 5F AZABI 5F
BALIG 5F GASBI 5F GIGRI 5F IPLED 5F
ITAKA 5F LUMUR 5F NEPIL 5F PIKAN 5F
PIRIM 5F RALAN 6F RIBMO 5F ULSON 5F

AKTAU
RWY 29



STANDARD ARRIVAL ROUTES – INSTRUMENT (STAR) AKTAU RWY 29	
PIRIM 5F After crossing PIRIM (N444808 E0511741) proceed on track 180° to T. Crossing FL at PIRIM are by ATC. Cross NDB T at 4000.	AKUKU 5F After crossing AKUKU (N425036 E0510509) proceed on track 347° to VAKES (N433230 E0510000). After crossing VAKES proceed on track 008° to T. Crossing FL at AKUKU are by ATC. Cross NDB T at 4000.
AGILA 6F After crossing AGILA (N444901 E0515422) proceed on track 202° to T. Crossing FL at AGILA are by ATC. Cross NDB T at 4000.	GASBI 5F After crossing GASBI (N422611 E0502811) proceed on track 012° to VAKES (N433230 E0510000). After crossing VAKES proceed on track 008° to T. Crossing FL at GASBI are by ATC. Cross NDB T at 4000.
RIBMO 5F After crossing RIBMO (N442238 E0520908) proceed on track 227° to T. Crossing FL at RIBMO are by ATC. Cross NDB T at 4000.	PIKAN 5F After crossing PIKAN (N425300 E0493000) proceed on track 044° to T. Crossing FL at PIKAN are by ATC. Cross NDB T at 4000.
GIGRI 5F After crossing GIGRI (N441248 E0521256) proceed on track 237° to T. Crossing FL at GIGRI are by ATC. Cross NDB T at 4000.	IPLD 5F After crossing IPLD (N432348 E0493000) proceed on track 062° to T. Crossing FL at IPLD are by ATC. Cross NDB T at 4000.
ULSON 5F After crossing ULSON (N435244 E0522039) proceed on track 260° to T. Crossing FL at ULSON are by ATC. Cross NDB T at 4000.	ITAKA 5F After crossing ITAKA (N435224 E0493000) proceed on track 084° to T. Crossing FL at ITAKA are by ATC. Cross NDB T at 4000.
NEPIL 5F After crossing NEPIL (N434133 E0522455) proceed on track 271° to T. Crossing FL at NEPIL are by ATC. Cross NDB T at 4000.	RALAN 6F After crossing RALAN (N440812 E0493000) proceed on track 097° to T. Crossing FL at RALAN are by ATC. Cross NDB T at 4000.
BALIG 5F After crossing BALIG (N431944 E0515018) proceed on track 307° to T. Crossing FL at BALIG are by ATC. Cross NDB T at 4000.	AZABI 5F After crossing AZABI (N444424 E0493000) proceed on track 120° to T. Crossing FL at AZABI are by ATC. Cross NDB T at 4000.
LUMUR 5F After crossing LUMUR (N430639 E0512953) proceed on track 312° to VAKES (N433230 E0510000). After crossing VAKES proceed on track 008° to T. Crossing FL at LUMUR are by ATC. Cross NDB T at 4000.	ATNUR 5F After crossing ATNUR (N444559 E0500948) proceed on track 136° to T. Crossing FL at ATNUR are by ATC. Cross NDB T at 4000.